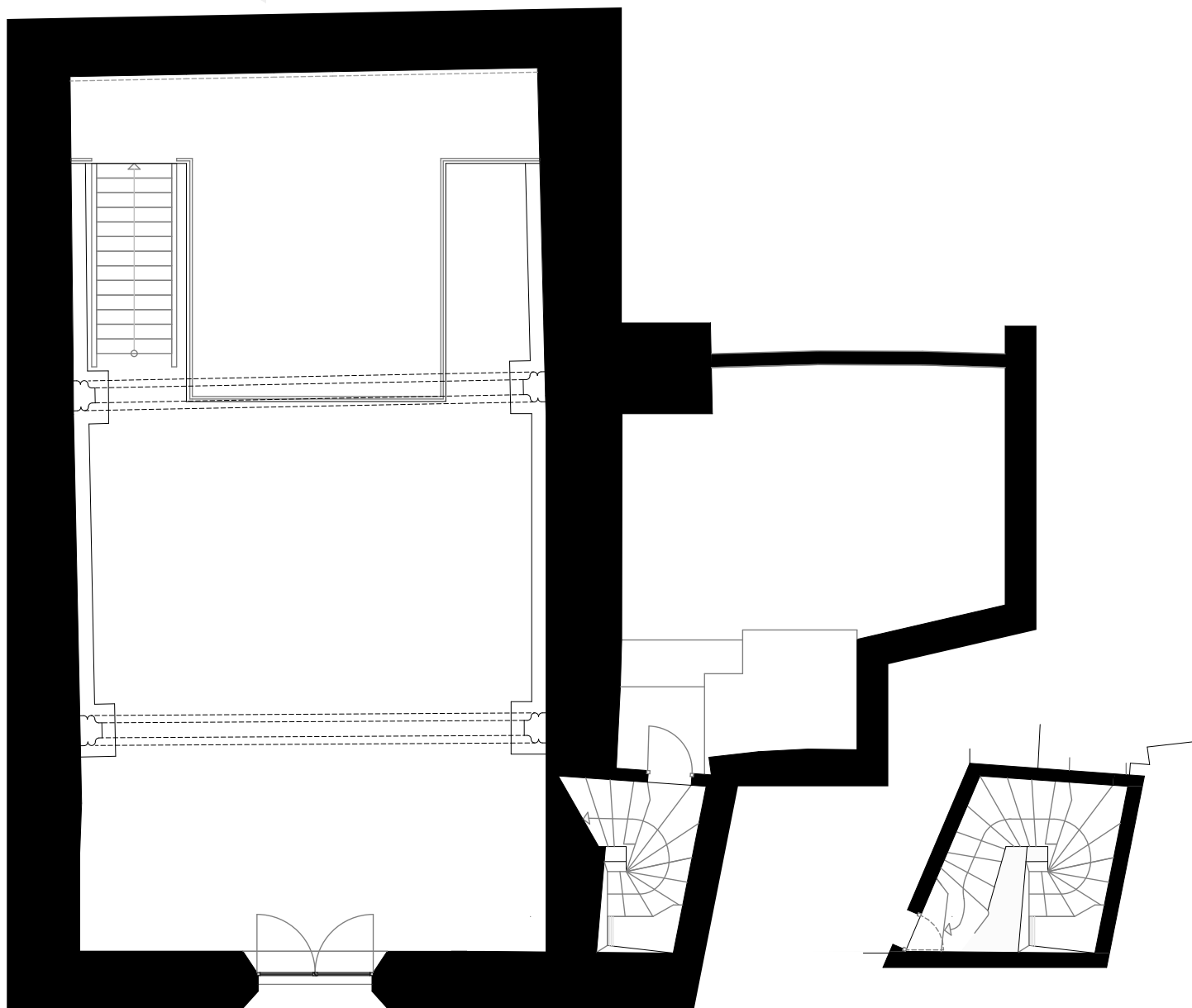
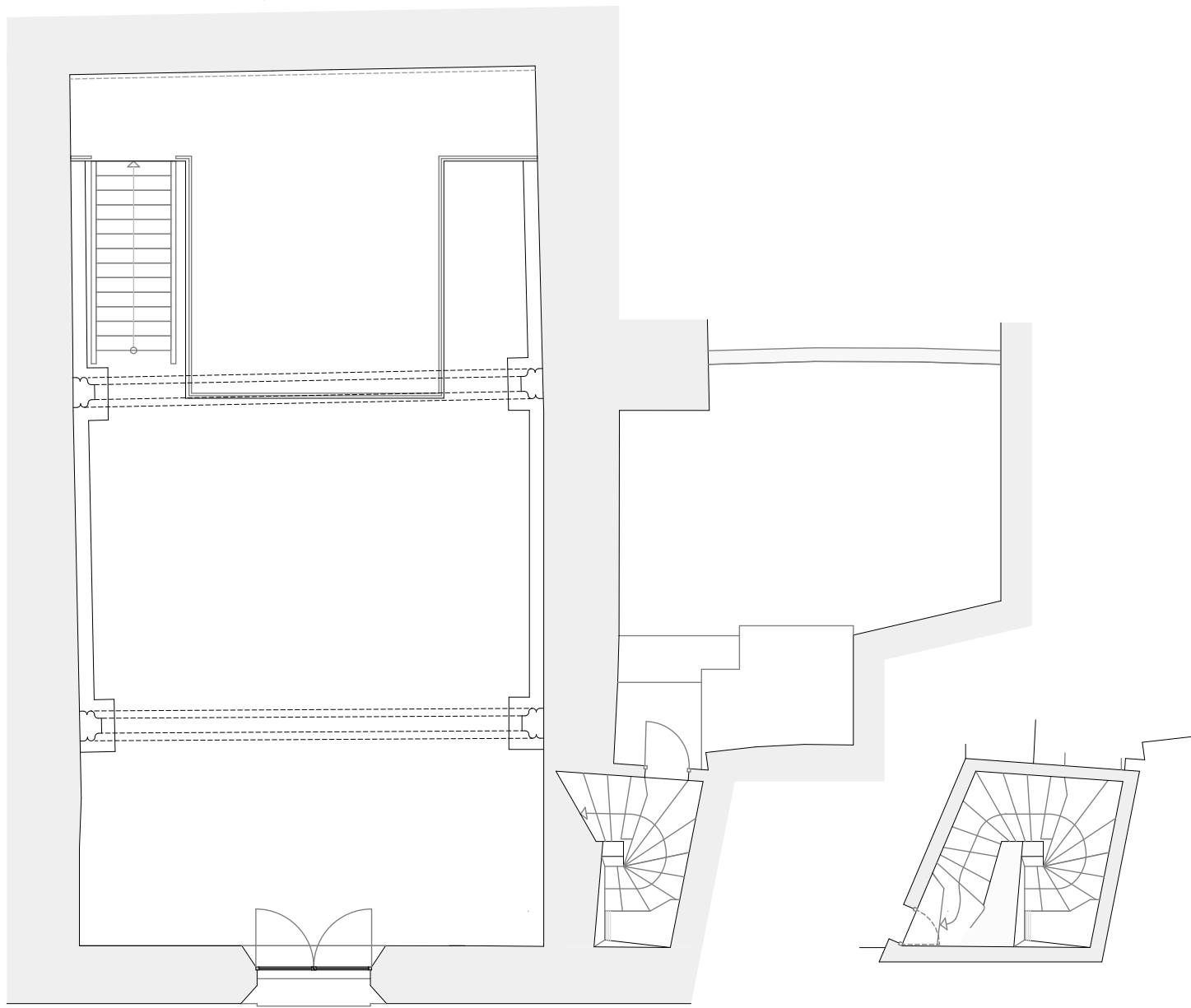


ATELIER FÜR ARCHITEKTUR
DIPLOM. ING. MARTIN ZIMMER
Boulevard Uzès
Maße 1:100
16.02.21



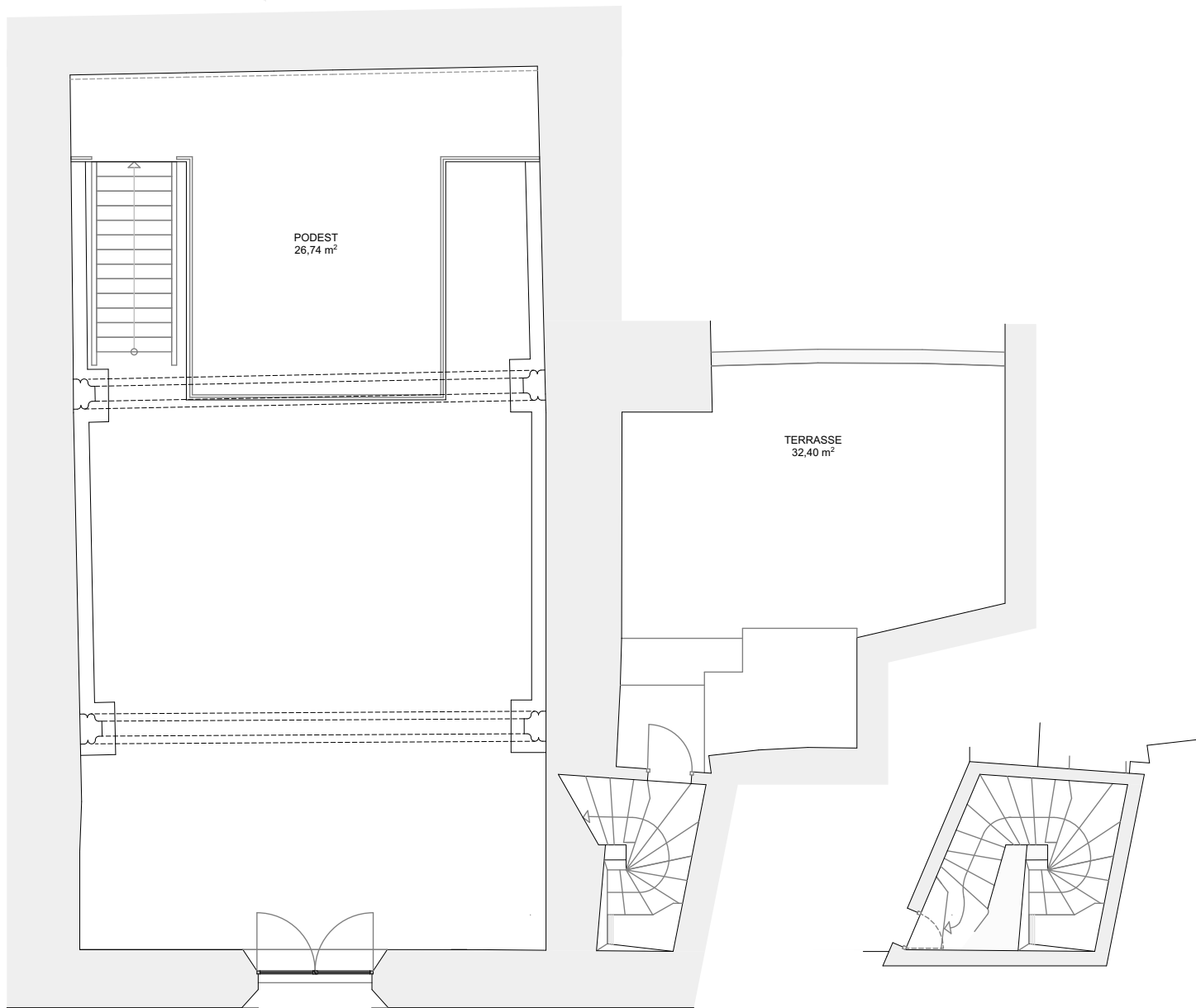


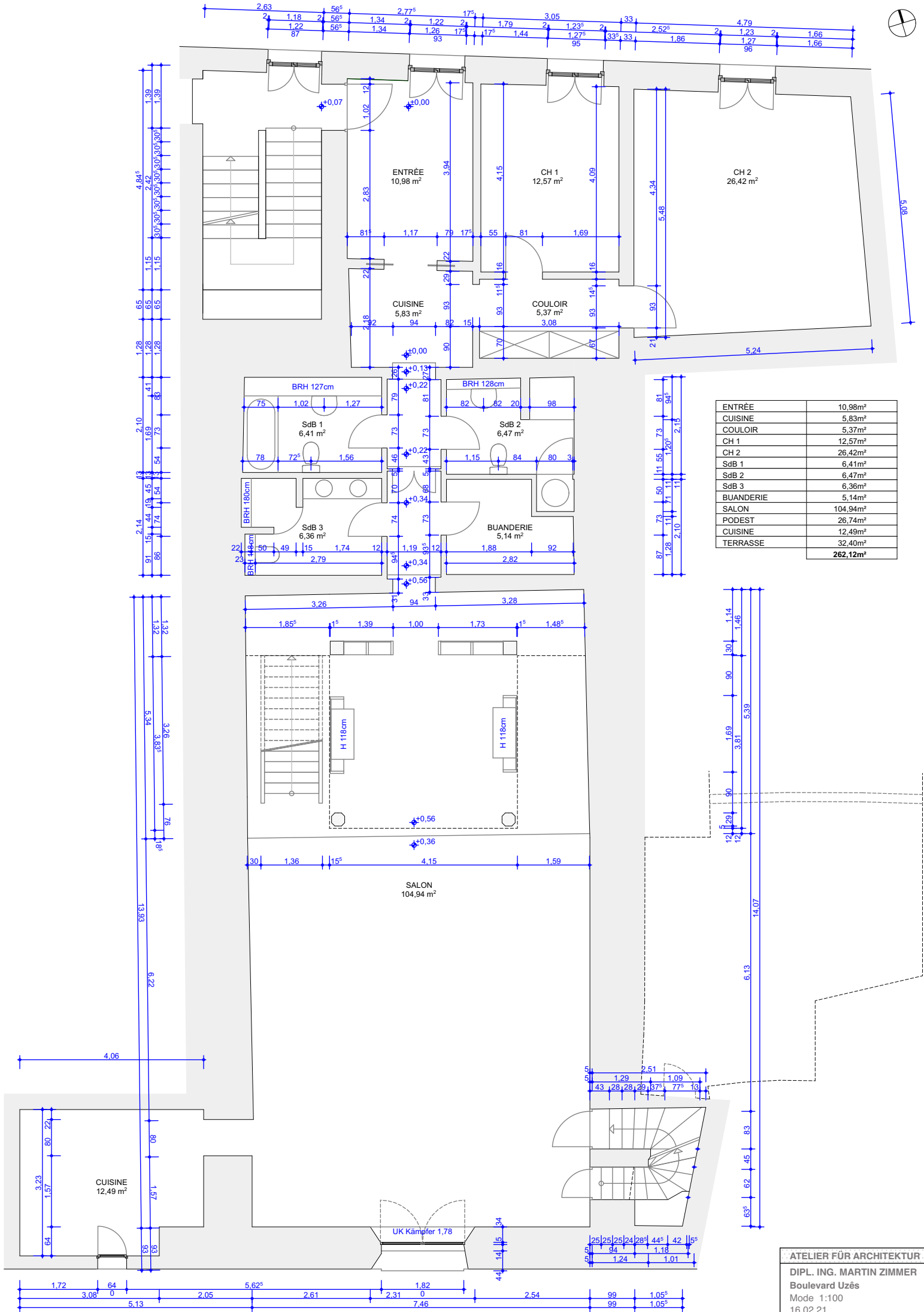
ATELIER FÜR ARCHITEKTUR
DIPL. ING. MARTIN ZIMMER
Boulevard Uzès
Maße 1:100
16.02.21





ENTRÉE	10,98m ²
CUISINE	5,83m ²
COULOIR	5,37m ²
CH 1	12,57m ²
CH 2	26,42m ²
SdB 1	6,41m ²
SdB 2	6,47m ²
SdB 3	6,36m ²
BUANDERIE	5,14m ²
SALON	104,94m ²
PODEST	26,74m ²
CUISINE	12,49m ²
TERRASSE	32,40m ²
	262,12m²





ENTRÉE	10,98m ²
CUISINE	5,83m ²
COULOIR	5,37m ²
CH 1	12,57m ²
CH 2	26,42m ²
SdB 1	6,41m ²
SdB 2	6,47m ²
SdB 3	6,36m ²
BUANDERIE	5,14m ²
SALON	104,94m ²
PODEST	26,74m ²
CUISINE	12,49m ²
TERRASSE	32,40m ²
TOTAL	262,12m²

